

TENOR

JAZZ BAND WARM-UPS

CONCERT F

KAMINSKY

1 G⁷ MEDIUM SWING C⁷ G⁷ G⁷

Exercise 1: Tenor saxophone part, measures 1-4. Tenor clef, key signature of one sharp (F#), 4/4 time signature. Notes: G4, A4, B4, C5. Chords: G⁷, C⁷, G⁷, G⁷.

2 G⁷ C⁷ G⁷ G⁷

Exercise 2: Tenor saxophone part, measures 1-4. Tenor clef, key signature of one sharp (F#), 4/4 time signature. Notes: G4, A4, B4, C5. Chords: G⁷, C⁷, G⁷, G⁷.

3 G⁷ C⁷ G⁷ G⁷

Exercise 3: Tenor saxophone part, measures 1-4. Tenor clef, key signature of two sharps (F#, C#), 4/4 time signature. Notes: G4, A4, B4, C5. Chords: G⁷, C⁷, G⁷, G⁷.

2

4

TENOR

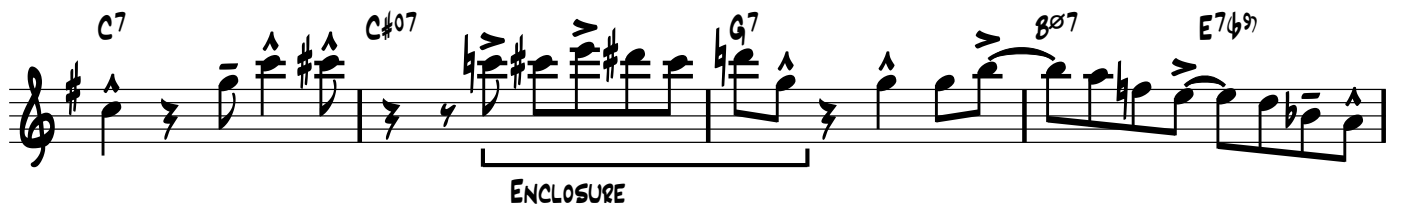
Musical notation for measure 4, consisting of three staves. The first staff has a treble clef and a key signature of one sharp (F#). It contains four measures of chords: G7, C7, G7, and G7. The second staff has a treble clef and a key signature of one sharp (F#). It contains four measures of chords: C7, C7, G7, and G7. The third staff has a treble clef and a key signature of one sharp (F#). It contains four measures of chords: D7, C7, G7, and D7. All chords are represented by whole notes with stems pointing down.

5

Musical notation for measure 5, consisting of three staves. The first staff has a treble clef and a key signature of one sharp (F#). It contains four measures of eighth notes with stems pointing up, followed by rests. The notes are G4, A4, B4, and G4. The second staff has a treble clef and a key signature of one sharp (F#). It contains four measures of eighth notes with stems pointing up, followed by rests. The notes are G4, A4, B4, and G4. The third staff has a treble clef and a key signature of one sharp (F#). It contains four measures of eighth notes with stems pointing up, followed by rests. The notes are G4, A4, B4, and G4. Chords G7, C7, and D7 are indicated above the notes.

6

Musical notation for measure 6, consisting of three staves. The first staff has a treble clef and a key signature of one sharp (F#). It contains four measures of eighth notes with stems pointing up, followed by rests. The notes are G4, A4, B4, and G4. The second staff has a treble clef and a key signature of one sharp (F#). It contains four measures of eighth notes with stems pointing up, followed by rests. The notes are G4, A4, B4, and G4. The third staff has a treble clef and a key signature of one sharp (F#). It contains four measures of eighth notes with stems pointing up, followed by rests. The notes are G4, A4, B4, and G4. Chords G7, C7, C#07, G7, Emi7, Ami7, Bmi7, Emi7, Ami7, and D7 are indicated above the notes.



BLUES LICK #1 - SONNY MOON FOR TWO

BLUES LICK #2 - NIGHT TRAIN

BLUES LICK #3 - BAG'S GROOVE

BLUES LICK #4

BLUES LICK #5

BLUES LICK #6

BLUES LICK #7

BLUES LICK #8

II V7 I PATTERNS - CONCERT F MAJOR

II V7 PATTERN #1

Am⁷ D⁷ G^{Maj7}

II V7 PATTERN #2

Am⁷ D⁷ G^{Maj7}

II V7 PATTERN #3

Am⁷ D⁷ G^{Maj7}

II V7 PATTERN #4

Am⁷ D⁷ G^{Maj7}

II V7 PATTERN #5

Am⁷ D⁷ G^{maj7}

II V7 PATTERN #6

Am⁷ D⁷ G^{maj7}

CONCERT F BLUES PROGRESSION WITH II V PATTERNS

G⁷ C⁷ G⁷ Dm⁷ G⁷

C⁷ C^{#o7} G⁷ Bm^{7(b9)} E^{7(b9)}

Am⁷ D⁷ G⁷ Am⁷ D⁷ G⁷