

# JAZZ BAND WARM-UPS

## CONCERT F

DRUM SET

KAMINSKY

**1** MEDIUM SWING

RIDE CYMBAL

BASS DRUM

HI-HAT

Exercise 1 is a 4-measure piece in 4/4 time, labeled '1 MEDIUM SWING'. The notation is written on three staves: Ride Cymbal, Bass Drum, and Hi-Hat. The first two measures contain rhythmic patterns: the Ride Cymbal has eighth notes with 'x' marks, the Bass Drum has quarter notes, and the Hi-Hat has eighth notes. The last two measures consist of diagonal lines representing a continuous pattern.

FILL...

**2** AD LIB RHYTHMS ON SNARE

Exercise 2 is a 4-measure piece in 4/4 time, labeled '2 AD LIB RHYTHMS ON SNARE'. The notation is written on two staves: Snare Drum and Hi-Hat. The first two measures contain rhythmic patterns: the Snare Drum has eighth notes with 'x' marks, and the Hi-Hat has quarter notes. The last two measures consist of diagonal lines representing a continuous pattern.

FILL...

**3** AD LIB RHYTHMS ON SNARE

Exercise 3 is a 4-measure piece in 4/4 time, labeled '3 AD LIB RHYTHMS ON SNARE'. The notation is written on two staves: Snare Drum and Hi-Hat. The first two measures contain rhythmic patterns: the Snare Drum has eighth notes with 'x' marks, and the Hi-Hat has quarter notes. The last two measures consist of diagonal lines representing a continuous pattern.

FILL...

**4** AD LIB RHYTHMS ON SNARE

Musical notation for exercise 4, showing snare rhythms on a staff. The notation includes various notes and rests, with some notes marked with 'x' and others with a downward arrow. The exercise is divided into four measures, with the last two measures marked "FILL...".

FOCUS ON THE TIME AND TRY AND CATCH THE FIGURES WITH THE BAND.  
REMEMBER, THE TIME AND GROOVE IS MOST IMPORTANT!

**5** Bb7

Musical notation for exercise 5, showing snare rhythms on a staff. The notation includes various notes and rests, with some notes marked with 'x' and others with a downward arrow. The exercise is divided into four measures, with the last two measures marked "FILL...".

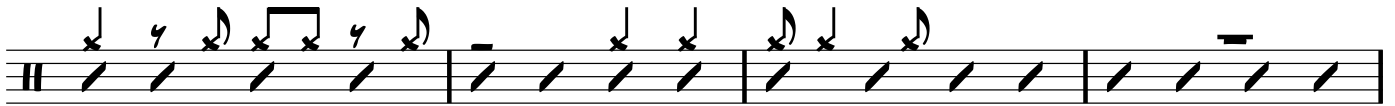
**6**

Musical notation for exercise 6, showing snare rhythms on a staff. The notation includes various notes and rests, with some notes marked with 'x' and others with a downward arrow. The exercise is divided into four measures, with the last two measures marked "FILL...".

7



8



4

### BLUES LICK #1 - SONNY MOON FOR TWO

A musical staff with a treble clef and a key signature of one flat. The staff contains four measures of music. The first measure has a quarter note G4, a quarter note A4, and a quarter note Bb4. The second measure has a quarter note C5, a quarter note Bb4, and a quarter note A4. The third measure has a quarter note G4, a quarter note F4, and a quarter note E4. The fourth measure has a quarter note D4, a quarter note C4, and a quarter note Bb3. There are slurs over the first two notes of the first measure and the last two notes of the fourth measure.

### BLUES LICK #2 - NIGHT TRAIN

A musical staff with a treble clef and a key signature of one flat. The staff contains four measures of music. The first two measures are empty. The third measure has a quarter note G4, a quarter note A4, and a quarter note Bb4. The fourth measure has a quarter note C5, a quarter note Bb4, and a quarter note A4. There are slurs over the first two notes of the third measure and the last two notes of the fourth measure.

### BLUES LICK #3 - BAG'S GROOVE

A musical staff with a treble clef and a key signature of one flat. The staff contains four measures of music. The first measure has a quarter note G4, a quarter note A4, and a quarter note Bb4. The second measure has a quarter note C5, a quarter note Bb4, and a quarter note A4. The third measure has a quarter note G4, a quarter note F4, and a quarter note E4. The fourth measure has a quarter note D4, a quarter note C4, and a quarter note Bb3. There are slurs over the first two notes of the first measure and the last two notes of the third measure.

### BLUES LICK #4 TIME

An empty musical staff with a treble clef and a key signature of one flat, consisting of four measures.

### BLUES LICK #5

### BLUES LICK #6

Two empty musical staves with a treble clef and a key signature of one flat, each consisting of four measures.

### BLUES LICK #7

An empty musical staff with a treble clef and a key signature of one flat, consisting of four measures.

### BLUES LICK #8

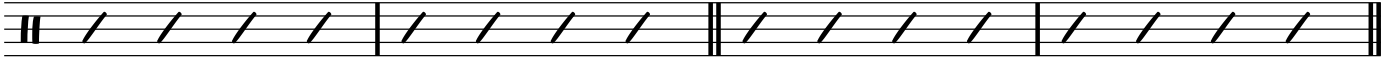
An empty musical staff with a treble clef and a key signature of one flat, consisting of four measures.

**|| V7 | PATTERNS - CONCERT F MAJOR**

|| V7 PATTERN #1

|| V7 PATTERN #2

TIME



|| V7 PATTERN #3

|| V7 PATTERN #4



|| V7 PATTERN #5

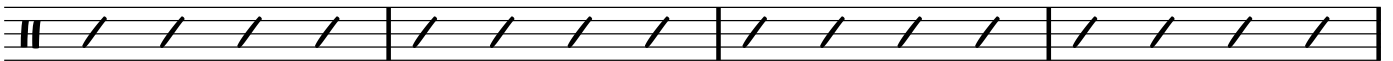
|| V7 PATTERN #6



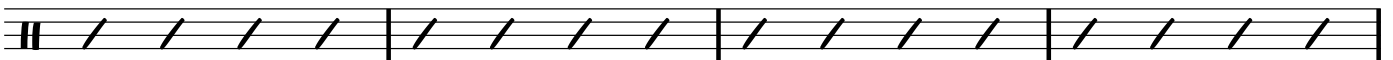
**CONCERT F BLUES PROGRESSION WITH || V PATTERNS**

TIME

FILL.....



FILL.....



FILL.....

